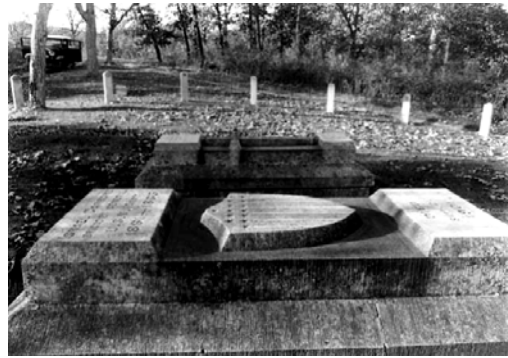


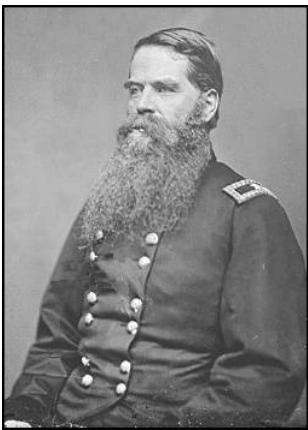


Kate Wood Garrard

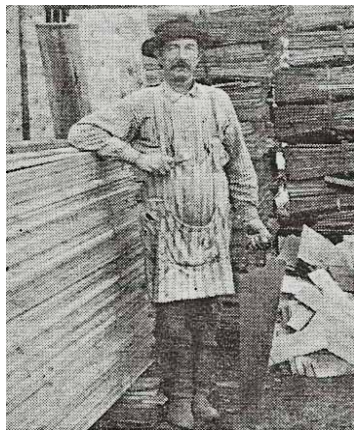


Garrard Family Cemetery Site

1867. Anna Steffenhagen, Kate Wood Garrard (wife of Israel Garrard), and her infant son are the first residents to be buried in the Florence Township cemetery (south of Green Street).



Nathaniel McLean



Henry Huneke



Christ Episcopal Church

1868. Christ Episcopal Church was consecrated at its present location on Westervelt Avenue and McLean Street. Nathaniel McLean, step brother to the Garrards, led the design and funded the construction of the church. Master craftsman Henry Huneke led the construction team.



Lakeside Hotel - 1870



Hotel Cottages

1870. Lakeside Hotel was enlarged by adding an 80 foot 2-story addition to its west end. The hotel complex was further expanded with the additions of Kittle House (Grapevine), Virginia Cottage, Pine Cottage, Poplar Cottage, and Fern Cottage. All were moved from various sites on the "village" level via Waconia Avenue using horses and logs.

1871. Garrard family donates land for a railroad right-of-way two miles to the west of Frontenac. This and a like donation by Wacouta land owners, routes the railroad and a future federal highway into an inner valley thus preserving Frontenac, Wacouta, and the adjoining blufflands.



Winona Cottage
Garrard Avenue between Sumner and Faribault



Winona Cottage Stone Wall
Mortar Less Construction

1889. Winona Cottage is built on Garrard Avenue between Faribault and Sumner Streets by Israel Garrard as a wedding present to his son George and wife Virginia. A mortar less stone wall is constructed by teams of Native Americans led by tribal elder Little John.



Villa Maria Academy
South County Road #2 at Wells Creek



Villa Maria Fire - 1969

1889. Garrard family donates a tract of land to the Roman Catholic Ursuline Nuns for construction of Villa Maria Academy, a private religious oriented girls' boarding school. School Building (building with tall tower) was struck by lightning in 1969 and the school burned to the ground. The school was closed and has not reopened.

1890. A freak Lake Pepin storm sinks the Sea Wing, a boat and barge loaded with people, on July 13th one mile south of Frontenac. Ninety-eight (98) people, mostly from Red Wing and western Wisconsin towns, lost their lives. Some of the artifacts from this disaster washed up on the Frontenac shore.